

FACE MASK WITH INSIDE "POCKET" TO INSERT BARRIER/TISSUE



INSIDE "POCKET"



INSIDE "POCKET"

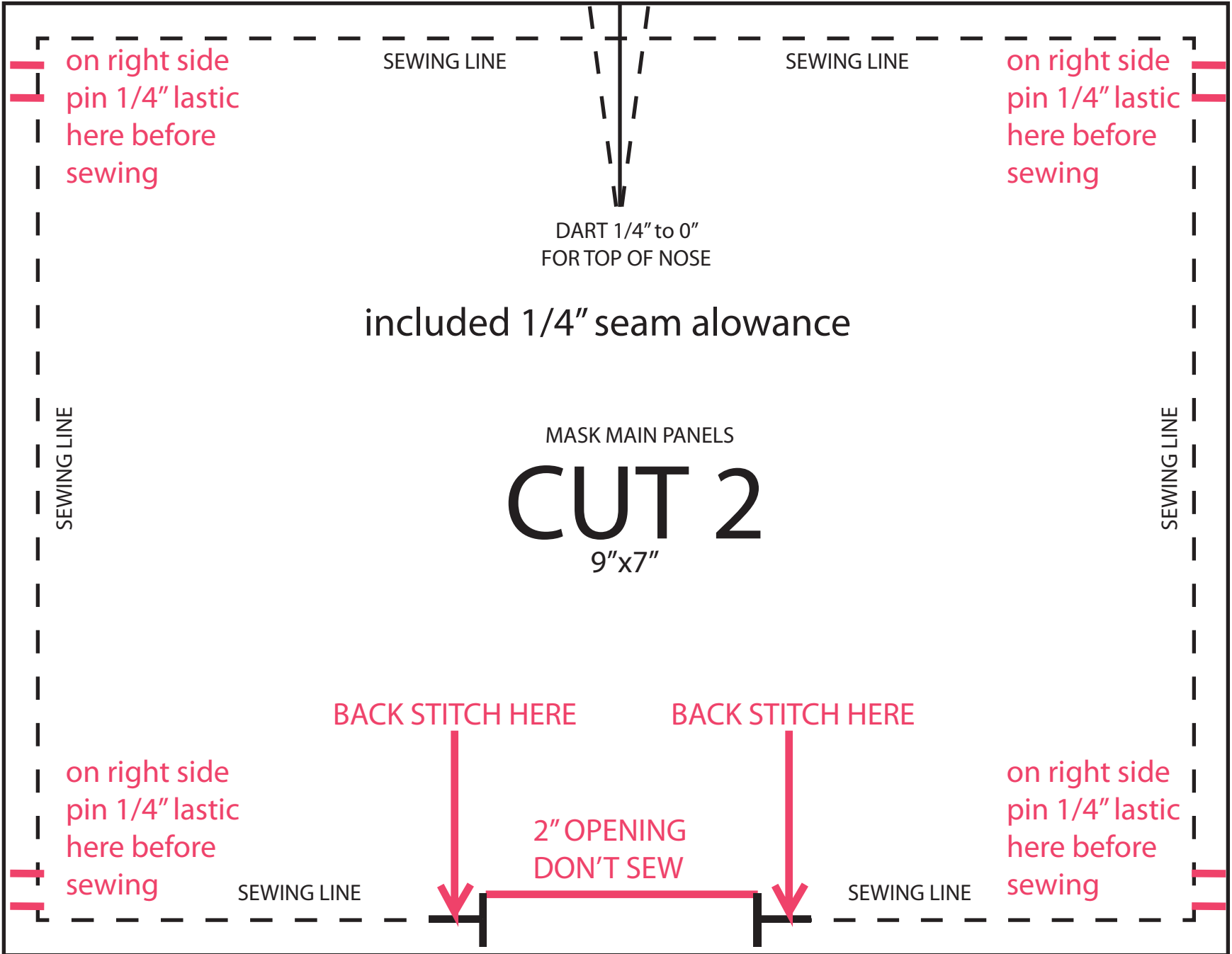


this is the side that is open so a barrier layer can be inserted

NOTE - FABRIC - TIGHT WEAVE/QUILTING/GINGHAM/POPLIN/LIGHT WT BUT TIGHT WEAVE
IF YOU HAVE FUSABLE OR NON FUSABLE INTERFACIG
ADD THIS AS ANOTHER LAYER

1

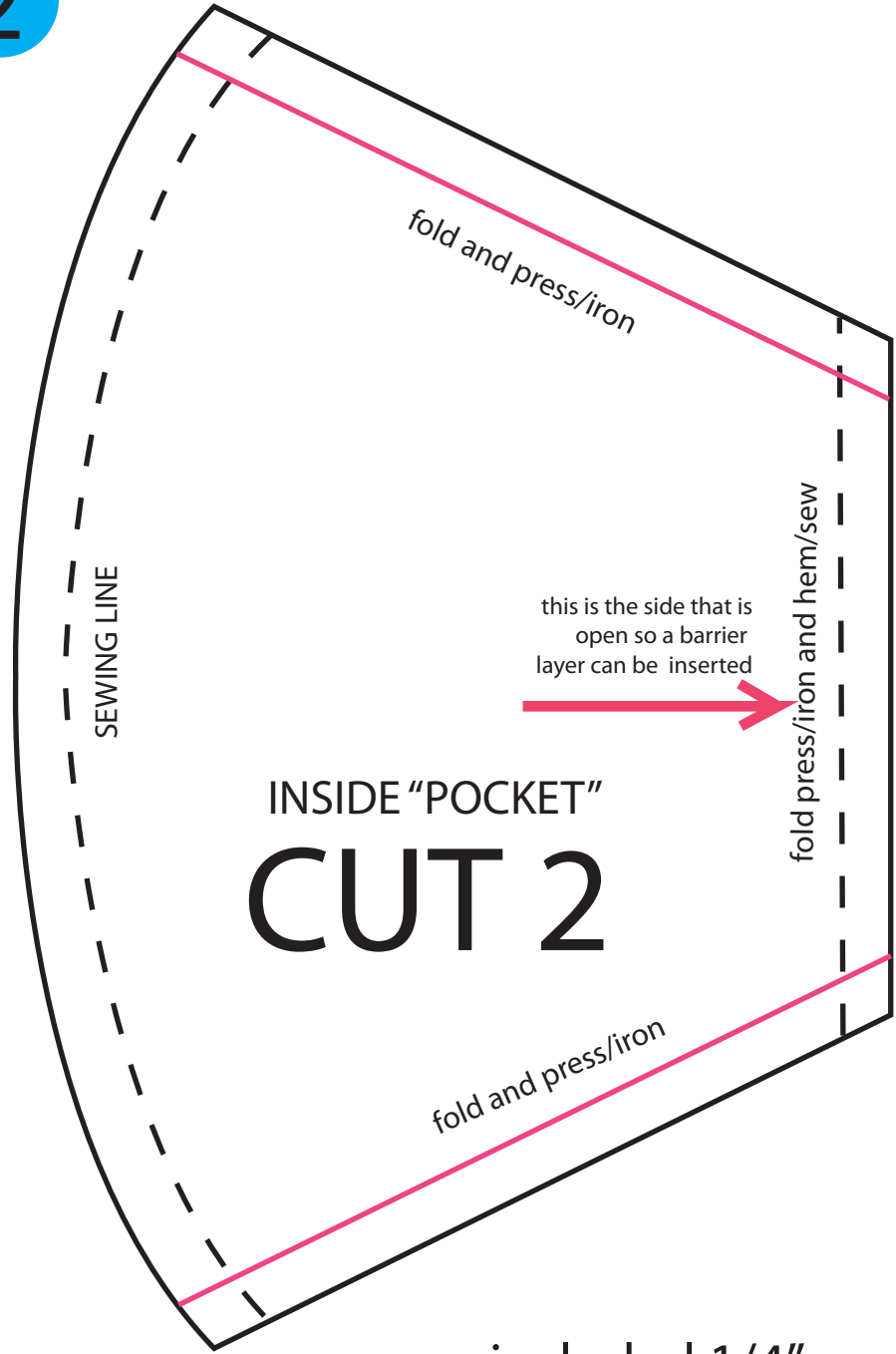
NOTE - FABRIC - TIGHT WEAVE/QUILTING/GINGHAM/POPLIN/LIGHT WT BUT TIGHT WEAVE
IF YOU HAVE FUSABLE OR NON FUSABLE INTERFACIG
ADD THIS AS ANOTHER LAYER



PATTERN TO SCALE

2

PATTERN TO SCALE



included 1/4" seam allowance

CUT 2 PEICES OF 1/4" ELASTIC - 7" LONG



x2

3

3. SEW AND PRESS/IRON
ON BOTH PANELS OF FABRIC - DART 1/4" to 0"
FOR TOP OF NOSE

2. PIN ELASTIC 1/4"
FROM SIDE CORNERS

2. PIN ELASTIC 1/4"
FROM SIDE CORNERS

2. PIN ELASTIC 1/4"
FROM SIDE CORNERS

2. PIN ELASTIC 1/4"
FROM SIDE CORNERS

DART 1/4" to 0"
FOR TOP OF NOSE

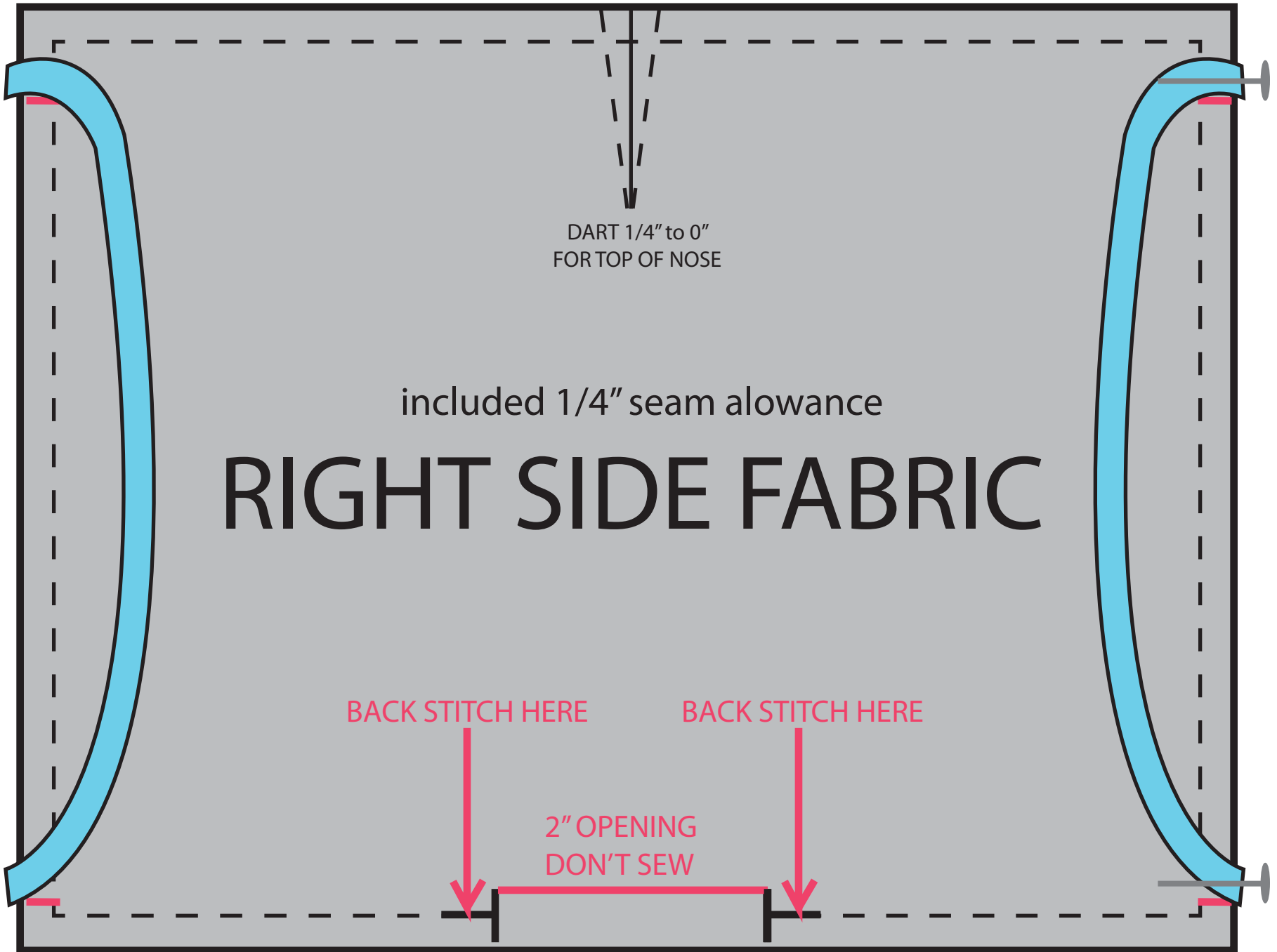
included 1/4" seam allowance

RIGHT SIDE FABRIC

BACK STITCH HERE

BACK STITCH HERE

2" OPENING
DON'T SEW



4

4. SANDWICH BACK/FRONT WITH ELASTIC PINNED INSIDE
RIGHT SIDES TOGETHER - PIN AND SEW LEAVING 2" OPENING AT BOTTOM

trim corners
after sewin

trim corners
after sewin

BACK STITCH HERE
FOR EXTRA ELASTIC
REINFORCEMENT

BACK STITCH HERE
FOR EXTRA ELASTIC
REINFORCEMENT

included 1/4" seam allowance

WRONG SIDE FABRIC

BACK STITCH HERE

BACK STITCH HERE

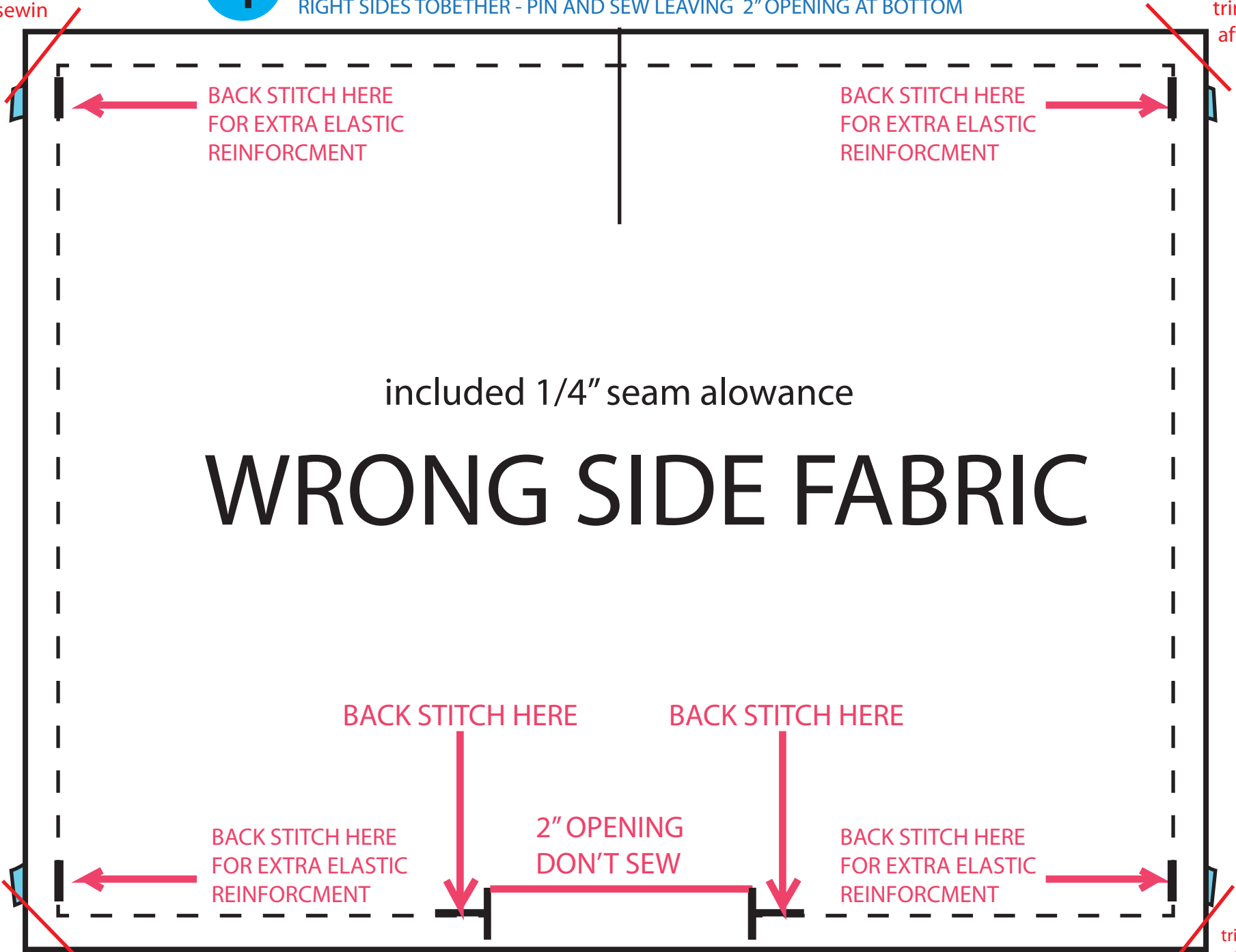
BACK STITCH HERE
FOR EXTRA ELASTIC
REINFORCEMENT

2" OPENING
DON'T SEW

BACK STITCH HERE
FOR EXTRA ELASTIC
REINFORCEMENT

trim corners
after sewin

trim corners
after sewin



5

5. TURN RIGHTSIDE OUT AND
PRESS/IRON

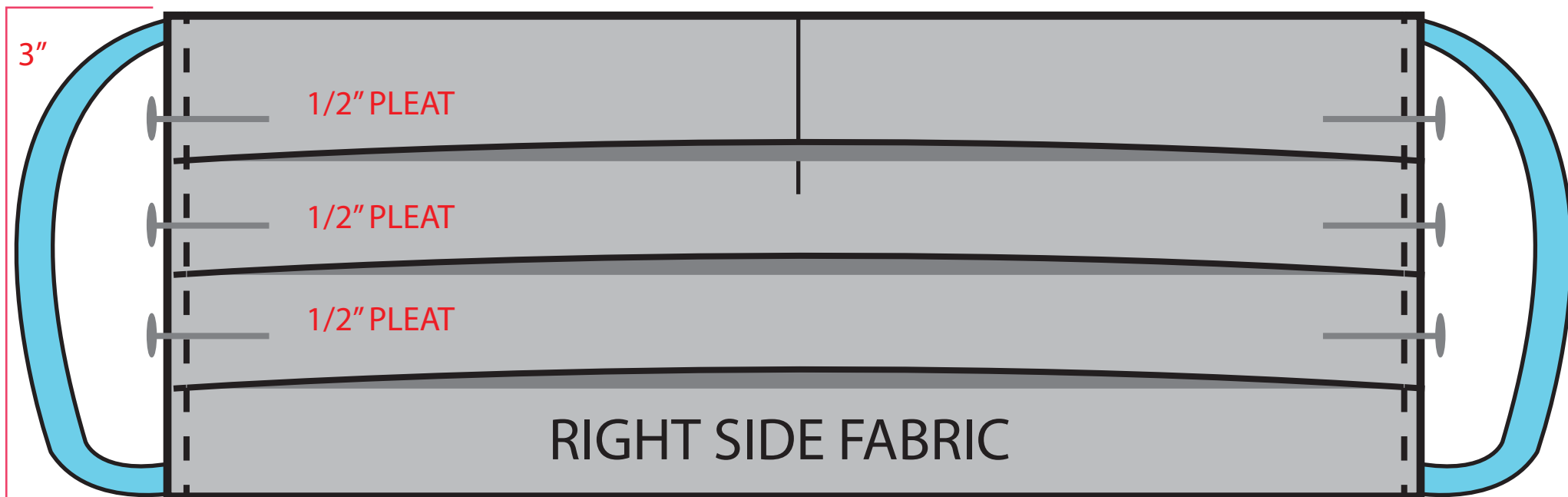


RIGHT SIDE FABRIC

The diagram shows a rectangular piece of light gray fabric with a black outline. Two light blue, curved handles are attached to the left and right sides. A vertical line is drawn near the top center of the fabric. The text 'RIGHT SIDE FABRIC' is centered on the fabric in a bold, black, sans-serif font.

6

6. MAKE x3 1/2 PLEATS- PLEATS FACING DOWN
PIN/PRESS AND SEW

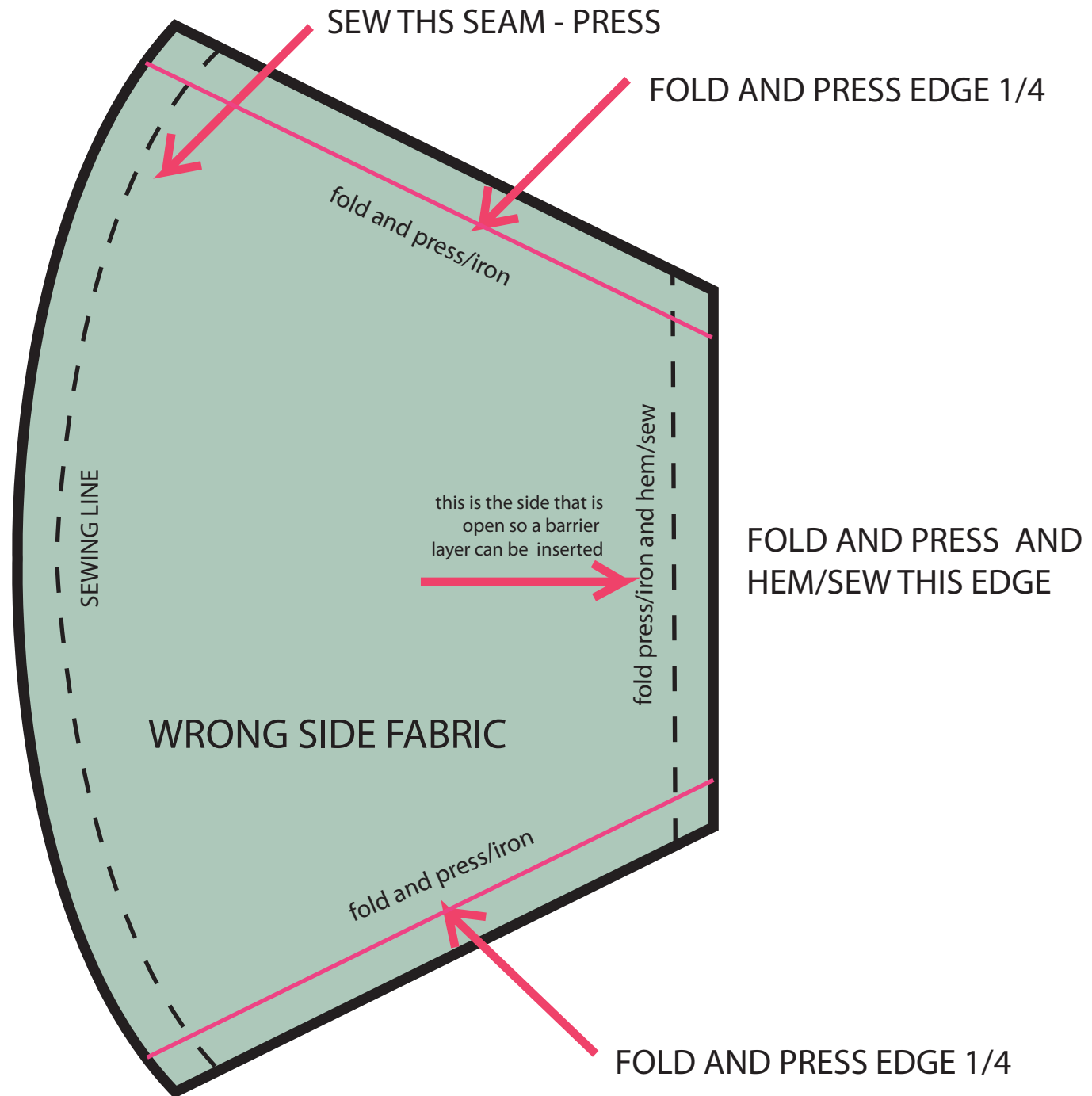


SEW THROUGH ALL
LAYERS 1/8" FROM SIDE
EDGE

SEW THROUGH ALL
LAYERS 1/8" FROM SIDE
EDGE

7

7. INSIDE "POCKET" WITH RIGHT SIDES TOGETHER SEW CENTER SEAM



8

8. INSIDE "POCKET" PLACMENT AND SEW
OPEN AND PRESS INSIDE "POCKET" FROM STEP 7
AND PIN AND SEW TO INSIDE OF MASK
SEW DOWN 1/8" FROM EDGE- LEAVE SIDE OPENINGS FOR
INSERTING A BARRIER/TISSUE

