



Fabric Masks

Scrap fabric masks with
envelope opening for filter
inserts and
elastic ear straps.

supplies

scrap fabric

pattern pieces

elastic

scissors

ruler

pins

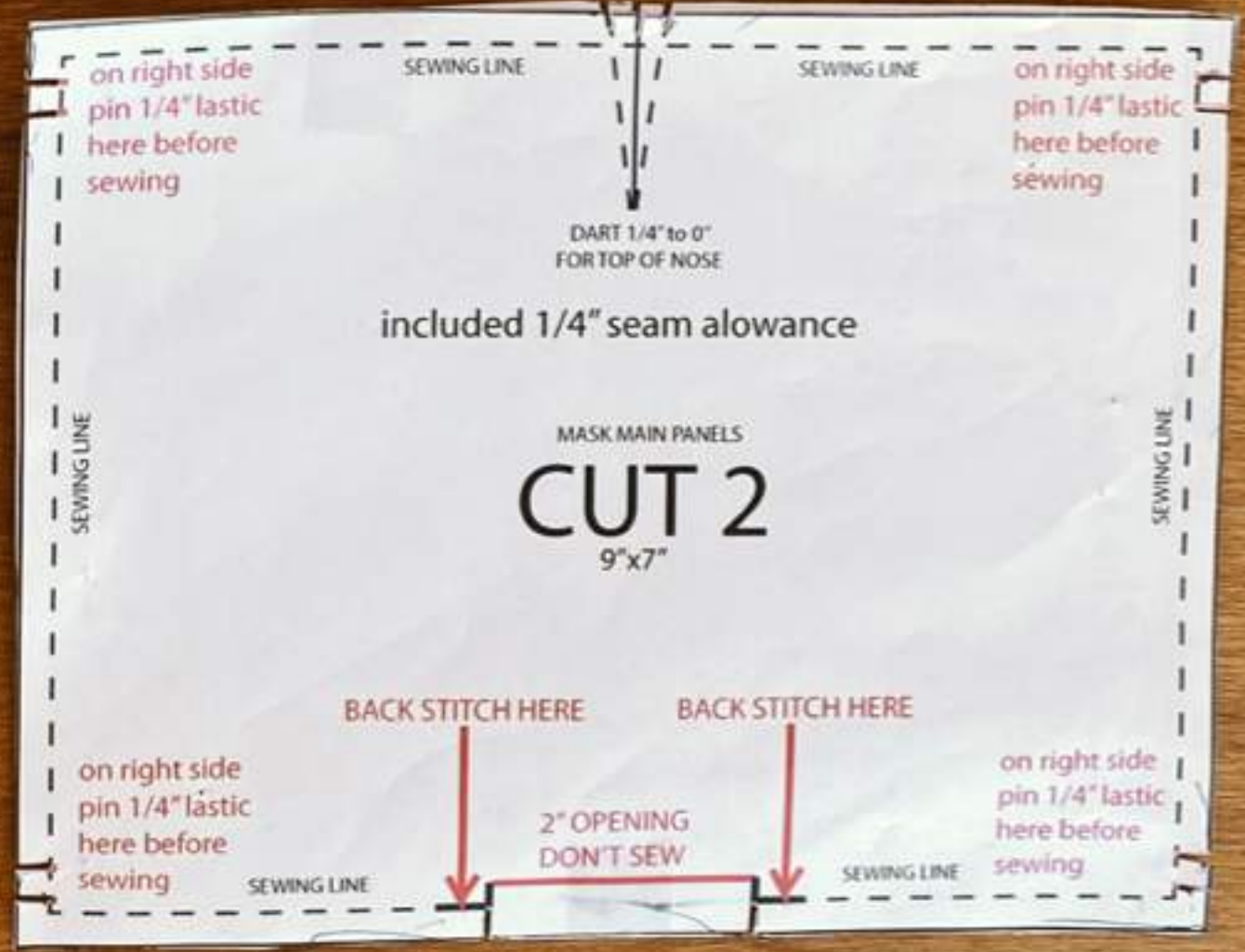
thread

pen or pencil

sewing machine

iron

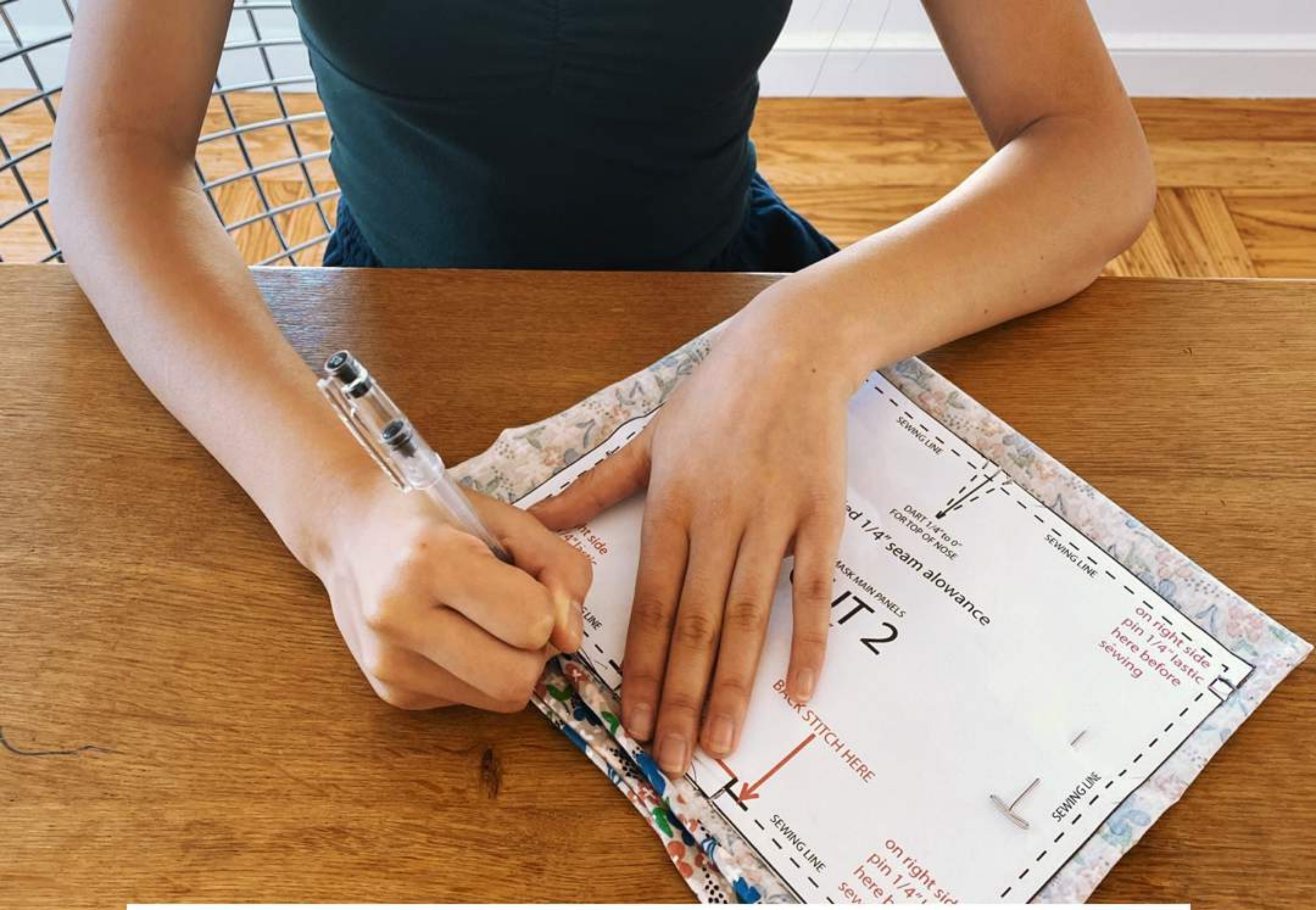
ironing board



step 1

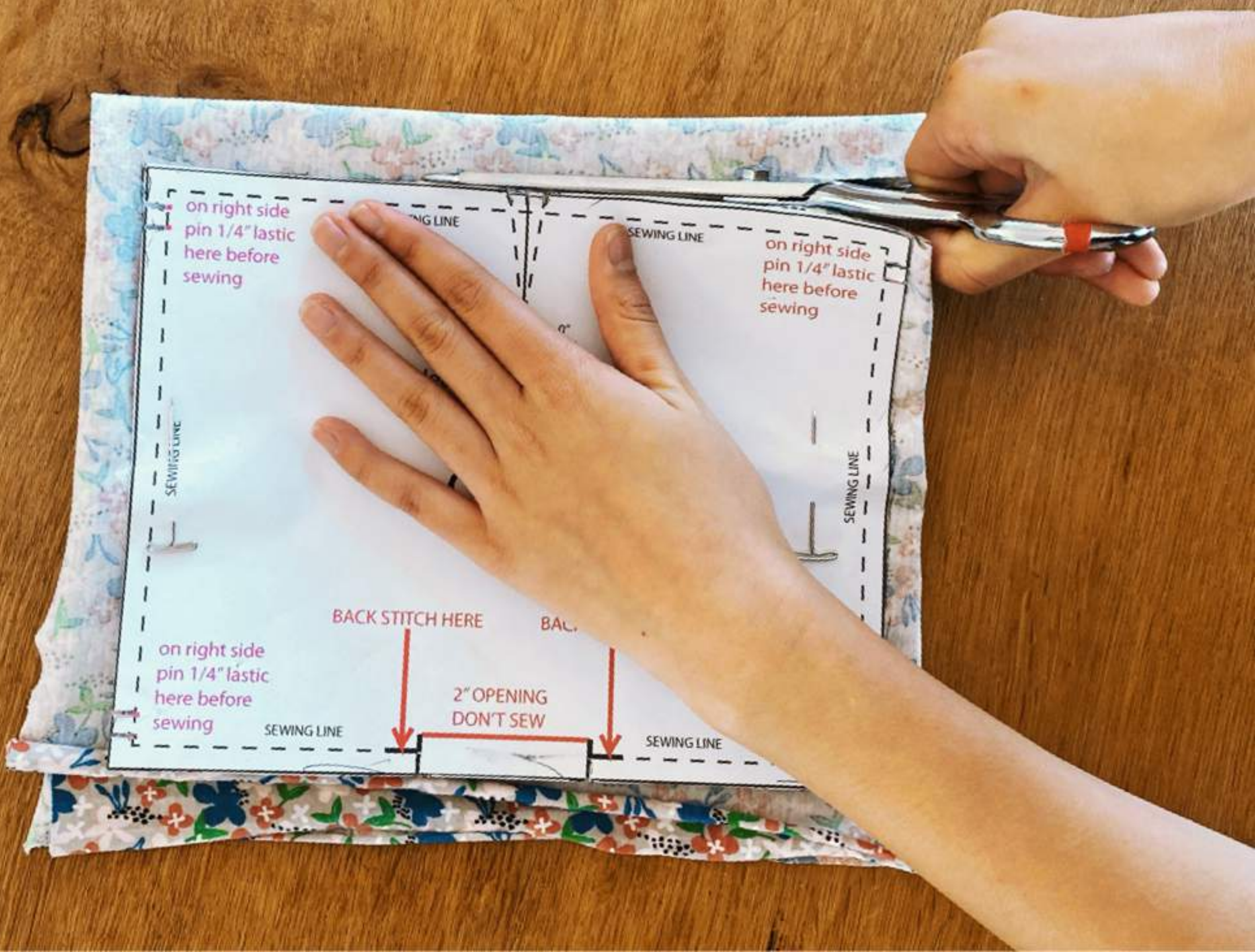


press and iron fabric



step 2

trace & cut out



step 3



cut 2 pieces of elastic 7" long



step 4
(x2) fold the rectangle piece
in 1/2 and press
then mark nose dart

step 5



(x2) sew nose dart

step 6



tack elastics on both sides
of the fabric



step 7

align face sides together and stitch
around perimeter leaving an opening to
flip inside out





step 8
trim each corner
turn inside out and press







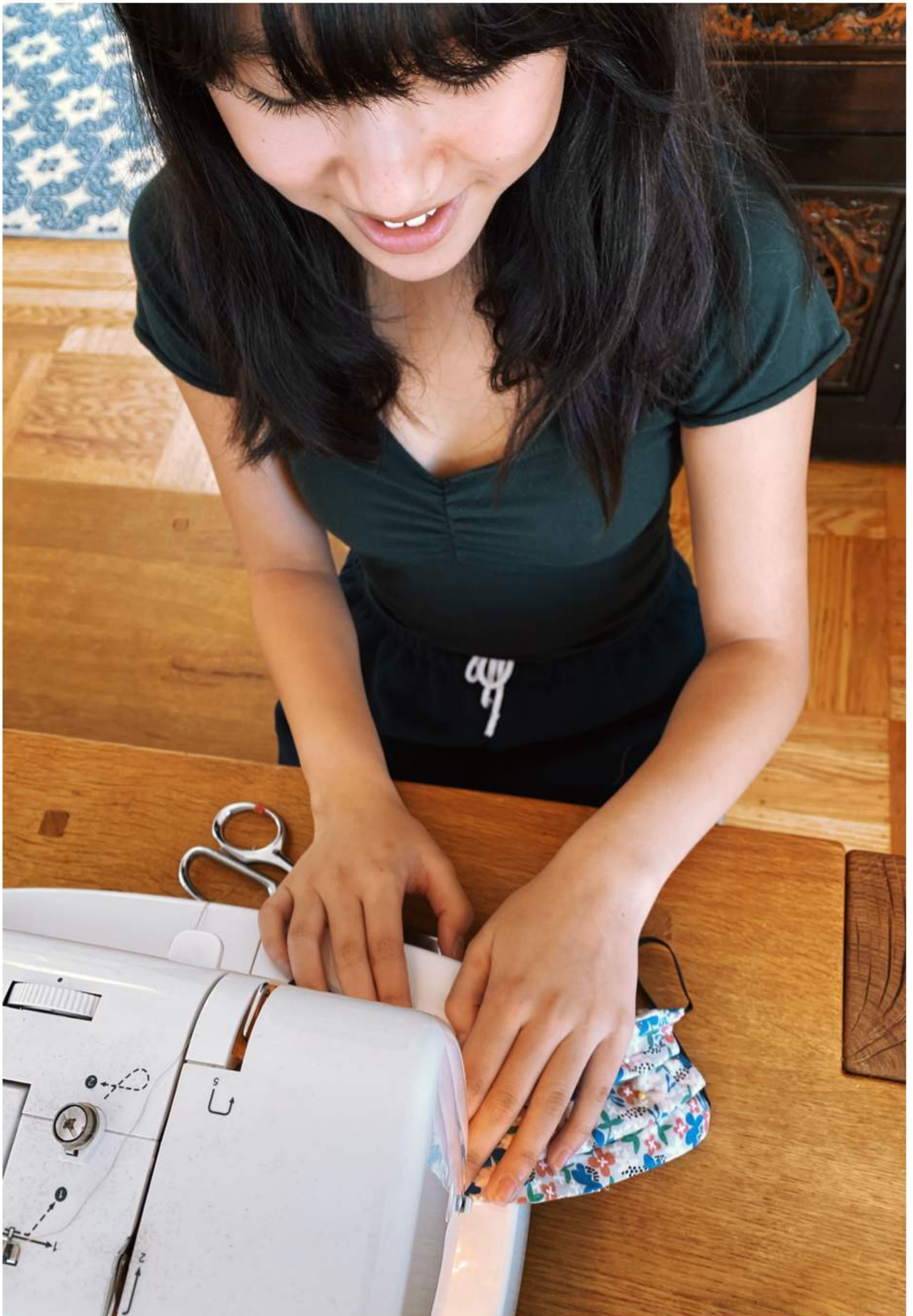
step 9

pin 2 1/2" pleats on
each side

sides should measure about
3" wide



step 10



edgestitch pleats on both sides

step 11
making the envelope

- 1) $3/8$ " stitch 2 face side together on the curved side
- 2) press $3/8$ " around edges
- 3) edgestich both ends





step 12

edgestitch top and
bottom together





Done!

